



1A Lancaster Road

Rayleigh, SS6 8UP

Offers In The Region Of £425,000



Smooth Move Estates is delighted to introduce this modern and beautifully appointed two-bedroom detached bungalow, completed in 2022 and crafted with impressive attention to detail.

Located in Rayleigh, the property is perfectly positioned for everyday convenience, close to local amenities and well-regarded schools. Rayleigh Station sits approximately 1.7 miles away, with Southend Airport around 3.6 miles, offering superb connectivity for commuters and frequent travellers.

The interior features a bright and spacious open-plan living, kitchen and dining area, fitted with integrated appliances and opening directly onto a private, easy-care rear garden with wooden pagoda and shed. Two generous double bedrooms and a sleek contemporary bathroom complete the layout, all presented with a consistent, high-quality finish. Outside, the property provides parking for two cars at the front. Additional benefits include underfloor and central heating and UPVC double glazing, ensuring comfort and strong energy efficiency throughout.



Entrance Hallway

A bright and airy hallway with laminate flooring, underfloor heating, flush ceiling lighting, painted walls and doors leading to all rooms.

Kitchen Diner Lounge 24'4" x 11'8" (7.42 x 3.56)

An impressive open plan family room with two sets of double patio doors leading to the rear garden. The kitchen area is fully fitted with a good range of base units, marble effect worktops white sink with chrome mixer and eye level cupboards surrounded by marble splash back wall panels. Fitted appliances include oven, hob and extractor fan and there are spaces for fridge freezer and washer / dryer. One set of patio doors leads to the garden from the kitchen area and the second set of doors leads from the lounge. The whole room has underfloor heating under laminate flooring.

Bedroom 1 11'1" x 11'1" (3.39 x 3.39)

Painted white, with grey carpet. Large UPVC window to front aspect with thermostatically controlled radiator underneath.

Bedroom 2 10'0" x 9'9" (3.07 x 2.99)

Painted white, with grey carpet. UPVC window to front aspect with thermostatically controlled radiator underneath.

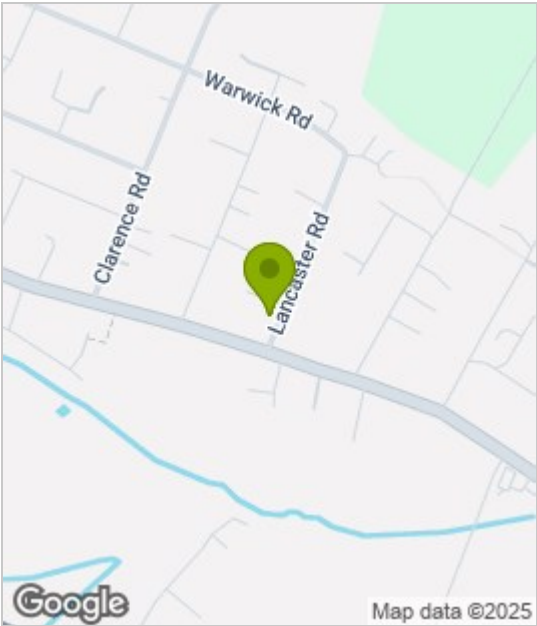
Bathroom 11'1" x 5'7" (3.38 x 1.71)

WC, hand basin with vanity unit under, bath with double headed shower and screen over. Opaque window to side aspect, grey shower wall panels and painted walls, flush ceiling lighting and center light, heated towel rail, laminate flooring.

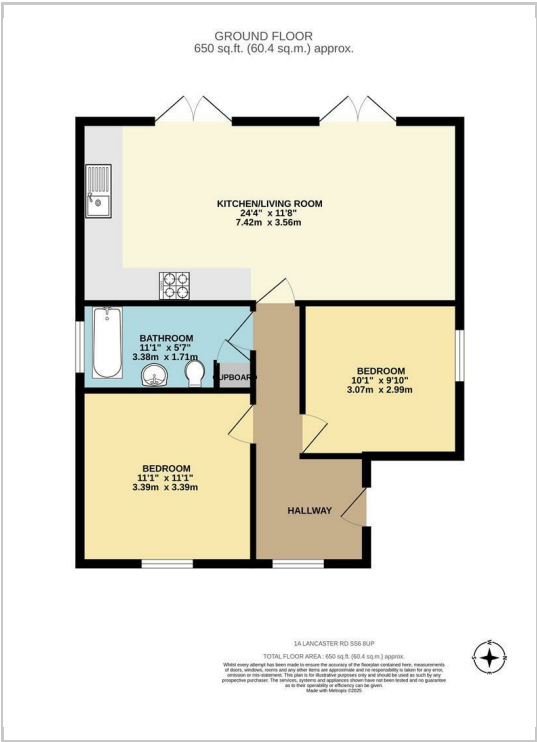
Rear Garden

A fully enclosed, unoverlooked, west facing, landscaped area with feature brick pathways, artificial lawn and horizontal fence panels with wooden pagoda area, outside lighting and shed. Secure side pedestrian access from front. The front garden is paved for parking part surrounded by an attractively styled privacy wall.

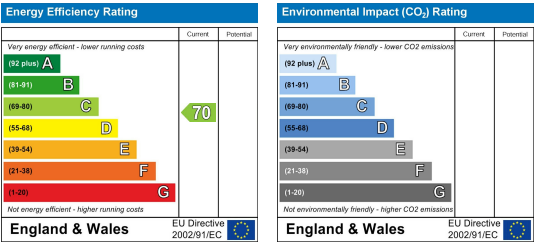
Area Map



Floor Plans



Energy Efficiency Graph



These particulars, whilst believed to be accurate are set out as a general outline only for guidance and do not constitute any part of an offer or contract. Intending purchasers should not rely on them as statements of representation of fact, but must satisfy themselves by inspection or otherwise as to their accuracy. No person in this firms employment has the authority to make or give any representation or warranty in respect of the property.